

N-trig DuoSense® Multi-Touch Package for Dell Latitude XT and XT2

Version 2.172

Release Notes

October 29, 2009

This document contains proprietary and confidential material of N-trig. Any unauthorized reproduction, use, or disclosure of this material or any part thereof, is strictly prohibited. This document is solely for the user of N-trig employees and authorized N-trig customers.

TABLE OF CONTENTS	4
ABOUT THIS DOCUMENT	3
RELEASE OVERVIEW	3
SOFTWARE CONFIGURATION	3
HARDWARE CONFIGURATION	3
INSTALLATION INSTRUCTIONS	4
WHAT'S NEW	6
CORRECTED ISSUES	7
KNOWN ISSUES	8
DUAL TECHNOLOGY MECHANISM	9
OVERVIEW	9
SWITCHING BETWEEN OPERATING SYSTEMS	10
SWITCHING FROM VISTA OR XP TABLET TO WINDOWS 7	10
SWITCHING FROM WINDOWS 7 TO VISTA OR XP TABLET	10

About this Document

These release notes provide information about the enhancements, resolved problems and known issues in the *N-trig DuoSense® Multi-Touch Package for the Dell Latitude XT and the Dell Latitude XT2 Version 2.172*.

Release Overview

Previously released versions of DuoSense enabled multi-touch gesture detection at device level. This allowed the support of multi-touch gestures in operating systems (OS) which did not inherently support multi-touch (XP Tablet, Vista for 32 and 64 bit).

For more information about working with DuoSense using two different operating systems, see the section entitled [Dual Technology Mechanism](#).

This release contains a full software package that enabled true multi-touch digitizer functionality of four fingers simultaneously, and is also compatible with standard Windows 7 capabilities, and protocol.

Important note: This software solution is compatible with the Dell Latitude XT and the Dell Latitude XT2, and is intended for Windows 7. Improvements and patches will be released periodically in the future.

Software Configuration

Windows 7 (Build 7600)	32-bit
Windows 7 (Build 7600)	64-bit

Hardware Configuration

This package uses the following hardware specifications:

Notebook PC	Dell Latitude XT tablet
Notebook PC	Dell Latitude XT2 tablet

NOTE: This package is only compatible with the above-mentioned software and hardware.

Installation Instructions

This section describes the various installation options for *N-trig DuoSense Multi-Touch Package for Dell Latitude XT and Latitude XT2 2.172*.

The installation package comprises a host driver, firmware and software package. Installation of the N-trig DuoSense Multi-Touch Package for Windows 7 should be performed in the standard Windows manner.

Note: You must ensure that your computer is securely connected to an electrical source during the installation process and disconnected from its docking station.

There are two installation procedures available.

1. [No prior version of DuoSense](#)

Use this procedure if you either uninstalled a prior version of DuoSense for Windows 7, or never upgraded to it.

2. [Prior version of DuoSense](#)

You should use this procedure if you either:

- Had a previous version of DuoSense for Windows 7 (beta or RC), and did not uninstall it prior to this installation of the DuoSense RTM.
- Have a version of DuoSense installed, and have upgraded to a newer Windows 7 build.

To install *N-trig DuoSense Multi-Touch Package for Dell Latitude XT and Dell Latitude XT2 2.172* on Windows 7 RTM (no prior version installed):

1. Run the **DuoSense_MT_RTM_Win7_XXbit_YY_2.172.exe** setup file.

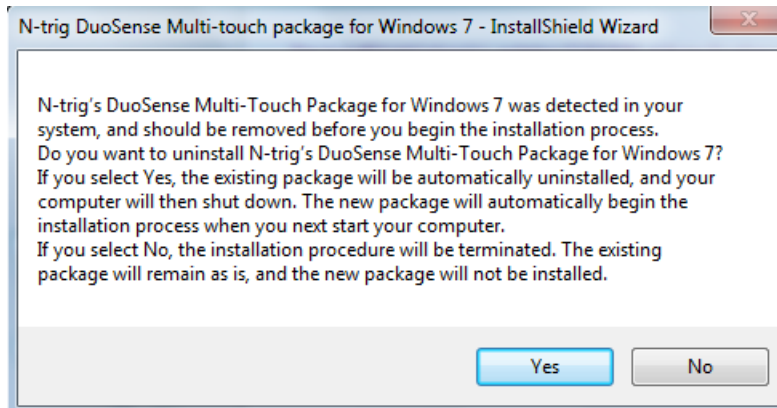
Where:

- XX – either 32bit or 64bit
 - YY – either LatitudeXT, or LatitudeXT2
2. Follow the instructions displayed as the installation progresses.
 3. The final step of the installation process requires you to restart your computer when the installation process completes. Select **Restart my computer now**, and click **Finish**.

You have now installed *N-trig DuoSense Multi-Touch Package for Dell Latitude XT and Dell Latitude XT2 2.172*.

To install *N-trig DuoSense Multi-Touch Package for the Dell Latitude XT and Dell Latitude XT2 2.172* (prior version installed):

1. The window below is displayed after the installation process begins. The notification states that the prior version of DuoSense needs to be uninstalled in order to proceed with the new installation.



2. Click **Yes**. The wizard then uninstalls the previous versions of DuoSense. It then requests confirmation to shut down the computer.
3. Click **OK**.
4. Once the computer has successfully shut down, manually power on again.
5. Once Windows resumes, a splash screen is displayed, indicating the beginning of the wizard that installs the latest N-trig DuoSense Multi-touch package for Windows 7. Click **Next**.
6. Follow the instructions displayed as the installation progresses.
7. The final step of the installation process requires restarting the computer. Select **Restart my computer now**, and click **Finish**.

You have now installed ***N-trig DuoSense Multi-Touch Package for the Dell Latitude XT and Latitude XT2 Package 2.172***.

To remove the *N-trig DuoSense Multi-Touch Package for the Dell Latitude XT and Latitude XT2 Package 2.172*:

In the Programs and Features section in the Control Panel, click **N-trig DuoSense Multi-Touch Package for Windows 7**, and select **Remove**.

Note: After removal of the N-trig DuoSense Multi-Touch Package for the Dell Latitude XT and Latitude XT2 Package 2.172, single touch and pen functionality will still be available.

What's New

- Windows 7 signed driver for multi-touch AQ

Corrected Issues

Description
Touch functionality occasionally stops working. Workaround: Press ALT+CTL+DEL and then click Cancel.
The following issues are relevant when working on Dual boot systems with Windows 7 and Vista, and using Vista: <ul style="list-style-type: none">• The stylus in Journal and Office applications does not work properly. Tracking works, and items can be marked, but writing does not always work• A calibration balloon is displayed after every reboot
The N-trig setting is exactly the same as that of the previous user, even after switching user.
The touch functionality is available under pen only mode.
The multi-touch sample rate may be lower than 50Hz.

Known Issues

The following section describes issues that will be corrected in a future release.

Description
After successful install and restart, the Operation System may need an additional shut down procedure to be performed.
After upgrade installation process on “non-clean” images, when trying to uninstall bundle in device manager all the drivers except of N-trig multi touch HID device are not removed (It doesn't interfere with the additional installation)
After a bundle installation on a “clean” system (no prior bundles), after the uninstall only the N-trig digitizer device remains.
Dell Diagnostics (UBIST) is not supported.
After a successful installation or firmware upgrade, the computer must be restarted twice.
During the installation procedure, the user must shut down the computer fully, and then power up again, as part of the procedure.
When touch or pen performance is degraded, the user should invoke 'touch tuning' using the control panel application.
In the Programs and Features option, there is a Windows icon, where the Pen and Touch icon should be displayed, next to the N-trig DuoSense device icon.

Dual Technology Mechanism

Overview

There are two types of multi-touch technology inherent in DuoSense: Multi Touch Gestures (MTG) and Multi Touch Manipulations (MTM).

DuoSense MTG supports the use of a stylus and up to two fingers, enabling gestures and special multi touch applications. MTG technology is supported by the Vista and XP Tablet OS.

DuoSense MTM supports an unlimited number of fingers, but is bound by the Windows 7 OS multi-touch requirements.

When switching between different OS, you are also switching between different multi-touch technologies.

Note: The computer models for which these procedures are relevant are the Dell Latitude XT and the Dell Latitude XT2.

Important notice:

If you wish to run a dual boot system, ensure that you install the DuoSense MTG package on Vista or XP **prior** to installing the DuoSense MTM package on Windows 7.

If you wish to replace your DuoSense MTM package with the original DuoSense MTG package on Windows 7, ensure that you first uninstall the MTM package, prior to installing the MTG package.

Failure to do either of the above may result in irreparable damage to your system.

Switching between operating systems

With either Windows Vista or XP Tablet, the default DuoSense technology is MTG.

If you uninstall any DuoSense multi-touch package for Windows 7, you will disable MTM functionality, and will only be able to use the DuoSense pen and single-touch functionality.

To resume MTG functionality on Windows 7, you must install the replacement DuoSense MTG functionality, as described [below](#).

Switching from Vista or XP Tablet to Windows 7

To switch between Windows Vista or XP Tablet and Windows 7, perform the following steps:

1. Reboot your computer, and run Windows 7.
2. Install the N-trig DuoSense multi-touch package for Windows 7.
3. Restart your computer. MTM functionality is enabled.

Switching from Windows 7 to Vista or XP Tablet

To switch between Windows 7 and Windows Vista or XP Tablet, perform the following steps:

1. In Windows7: Uninstall the N-trig DuoSense multi-touch package for Windows 7. The computer will automatically shut down.
2. Re-start your computer, and run either Windows Vista or XP Tablet, as required. MTG functionality is enabled

Note: To enable advanced MTG functionality, upgrade to a newer version of the N-trig DuoSense package.