

# **N-trig DuoSense® Multi-Touch Package for HP TouchSmart tx2**

Version 2.184

Release Notes

October 29, 2009

This document contains proprietary and confidential material of N-trig. Any unauthorized reproduction, use, or disclosure of this material or any part thereof, is strictly prohibited. This document is solely for the user of N-trig employees and authorized N-trig customers.

## Table of Contents

ABOUT THIS DOCUMENT.....	3
RELEASE OVERVIEW.....	3
SOFTWARE CONFIGURATION .....	3
HARDWARE CONFIGURATION.....	3
<b>INSTALLATION INSTRUCTIONS.....</b>	<b>4</b>
<b>WHAT'S NEW?.....</b>	<b>6</b>
<b>CORRECTED ISSUES.....</b>	<b>7</b>
<b>KNOWN ISSUES .....</b>	<b>8</b>
<b>DUAL TECHNOLOGY MECHANISM .....</b>	<b>9</b>
OVERVIEW.....	9
<b>SWITCHING BETWEEN OPERATING SYSTEMS .....</b>	<b>10</b>
SWITCHING FROM VISTA OR XP TABLET TO WINDOWS 7 .....	10
SWITCHING FROM WINDOWS 7 TO VISTA OR XP TABLET .....	10

## About this Document

These release notes provide information about the enhancements, resolved problems and known issues in the *N-trig DuoSense® Multi-Touch Package for the HP TouchSmart tx2 Version 2.184*.

## Release Overview

Previously released versions of DuoSense enabled multi-touch gesture detection at device level. This allowed the support of multi-touch gestures in operating systems (OS) which did not inherently support multi-touch (XP Tablet, Vista for 32 and 64 bit).

For more information about working with DuoSense using two different operating systems, see the section entitled [Dual Technology Mechanism](#).

This release contains a full software package that enabled true multi-touch digitizer functionality of two fingers simultaneously, and is also compatible with standard Windows 7 capabilities, and protocol.

**Important note:** This software solution is compatible with the HP TouchSmart tx2 and is intended for Windows 7. Improvements and patches will be released periodically in the future.

## Software Configuration

Windows 7 (Build 7600)	64-bit
------------------------	--------

## Hardware Configuration

This package uses the following hardware specifications:

Notebook PC	HP TouchSmart tx2 tablet
-------------	--------------------------

# Installation Instructions

This section describes the various installation options *N-trig DuoSense Multi-Touch Package for the HP TouchSmart tx2 Version 2.184*.

The installation package comprises a new and signed host driver, firmware and software package. Installation for the *N-trig DuoSense Multi-Touch Package for the HP TouchSmart tx2 Version 2.1841* should be performed in the standard manner.

**Note:** You must ensure that your computer is securely connected to an electrical source during the installation process and disconnected from its docking station.

There are two installation procedures available.

## 1. [No prior version of DuoSense](#)

Use this procedure if you either uninstalled a prior version of DuoSense for Windows 7, or never upgraded to it.

## 2. [Prior version of DuoSense](#)

You should use this procedure if you either:

- Had a previous version of DuoSense for Windows 7 (beta or RC), and did not uninstall it prior to this installation of the DuoSense RTM.
- Have a version of DuoSense installed, and have upgraded to a newer Windows 7 build.

**To install *N-trig DuoSense Multi-Touch Package for the HP TouchSmart tx2 Version 2.184* on Windows7 (no prior version installed):**

1. Run the **DuoSense\_MT\_RTM\_Win7\_64bit\_YY\_2.184\_Setup.exe** setup file.

Where:

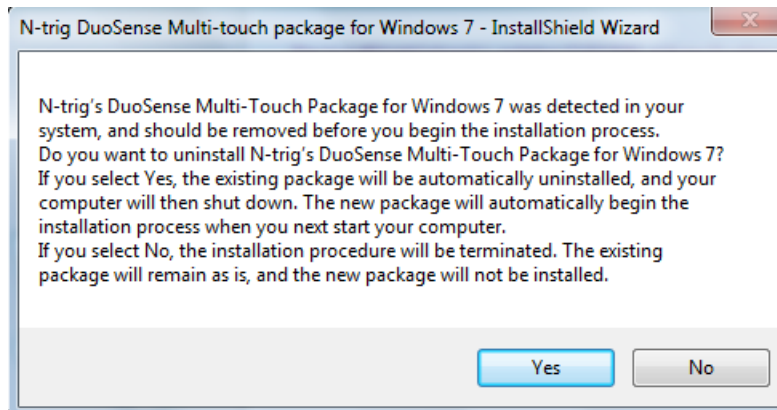
- YY – indicates TouchSmart tx2

2. Follow the instructions displayed as the installation progresses.
3. The final step of the installation process requires you to restart your computer when the installation process completes. Select **Restart my computer now**, and click **Finish**.

You have now installed *N-trig DuoSense Multi-Touch Package for the HP TouchSmart tx2 Version 2.184*.

**To install *N-trig DuoSense Multi-Touch Package for the HP TouchSmart tx2 2.184* (prior version installed):**

1. The window below is displayed after the installation process begins. The notification states that the prior version of DuoSense needs to be uninstalled in order to proceed with the new installation.



2. Click **Yes**. The wizard then uninstalls the previous versions of DuoSense. It then requests confirmation to shut down the computer.
3. Click **OK**.
4. Once the computer has successfully shut down, manually power on again.
5. Once Windows resumes, a splash screen is displayed, indicating the beginning of the wizard that installs the latest N-trig DuoSense Multi-touch package for Windows 7. Click **Next**.
6. Follow the instructions displayed as the installation progresses.
7. The final step of the installation process requires restarting the computer. Select **Restart my computer now**, and click **Finish**.

You have now installed *N-trig DuoSense Multi-Touch Package for the HP TouchSmart tx2 2.184* .

**To remove the *N-trig DuoSense Multi-Touch Package for the HP TouchSmart tx2 2.184*:**

In the Programs and Features section in the Control Panel, click **N-trig DuoSense Multi-Touch Package for Windows 7**, and select **Remove**.

**Note:** After removal of the N-trig DuoSense Multi-Touch Package for the HP TouchSmart tx2 2.184, single touch and pen functionality will still be available.

## What's New?

The following enhancements and new features were implemented in this release.

- New firmware version
- Signed and MT AQ logo driver

# Corrected Issues

The following section describes the problems corrected in this release:

<b>Description of Issue</b>
Occasionally, after long idle time, the control panel application may indicate the firmware number is 0.0.0.0,
Often there is no pen/touch after restart.

# Known Issues

The following section describes issues that will be corrected in a future release.

<b>Description of Problem</b>
Occasionally, after resuming from sleep/hibernate pen and touch may not work. Restarting the computer will solve this issue.
Sometimes, after a successful install, two restarts are required.

# Dual Technology Mechanism

## Overview

There are two types of multi-touch technology inherent in DuoSense: Multi Touch Gestures (MTG) and Multi Touch Manipulations (MTM).

DuoSense MTG supports the use of a stylus and up to two fingers, enabling gestures and special multi touch applications. MTG technology is supported by the Vista and XP Tablet OS.

DuoSense MTM supports an unlimited number of fingers, and is supported by the Windows 7 OS.

When switching between different OS, you are also switching between different multi-touch technologies.

**Note:** The computer model for which these procedures are relevant is the HP TouchSmart tx2.

### Important notice:

If you wish to run a dual boot system, ensure that you install the DuoSense MTG package on Vista or XP **prior** to installing the DuoSense MTM package on Windows 7.

If you wish to replace your DuoSense MTM package with the original DuoSense MTG package on Windows 7, ensure that you first uninstall the MTM package, prior to installing the MTG package.

**Failure to do either of the above may result in irreparable damage to your system.**

# Switching between operating systems

With either Windows Vista or XP Tablet, the default DuoSense technology is MTG.

If you uninstall any DuoSense multi-touch package for Windows 7, you will disable MTM functionality, and will only be able to use the DuoSense pen and single-touch functionality.

To resume MTG functionality on Windows 7, you must install the replacement DuoSense MTG functionality, as described [below](#).

## Switching from Vista or XP Tablet to Windows 7

To switch between Windows Vista or XP Tablet and Windows 7, perform the following steps:

1. Reboot your computer, and run Windows 7.
2. Install the N-trig DuoSense multi-touch package for Windows 7.
3. Restart your computer. MTM functionality is enabled.

## Switching from Windows 7 to Vista or XP Tablet

To switch between Windows 7 and Windows Vista or XP Tablet, perform the following steps :

1. In Windows7: Uninstall the N-trig DuoSense multi-touch package for Windows 7. The computer will automatically shut down.
2. Re-start your computer, and run either Windows Vista or XP Tablet, as required. MTG functionality is enabled

**Note:** To enable advanced MTG functionality, upgrade to a newer version of the N-trig DuoSense package.