

# **N-trig DuoSense™ Multi-Touch Package for Windows 7 Release Candidate**

Bundle version 2.59

Release Notes

May 6, 2009

This document contains proprietary and confidential material of N-trig. Any unauthorized reproduction, use, or disclosure of this material or any part thereof, is strictly prohibited. This document is solely for the user of N-trig employees and authorized N-trig customers.

## Table of Contents

<b>ABOUT THIS DOCUMENT .....</b>	<b>3</b>
<b>RELEASE OVERVIEW .....</b>	<b>3</b>
SOFTWARE CONFIGURATION .....	3
HARDWARE CONFIGURATION .....	3
<b>INSTALLATION INSTRUCTIONS .....</b>	<b>4</b>
<b>WHAT'S NEW .....</b>	<b>6</b>
<b>CORRECTED ISSUES .....</b>	<b>7</b>
<b>KNOWN ISSUES .....</b>	<b>8</b>
<b>DUAL TECHNOLOGY MECHANISM .....</b>	<b>10</b>
OVERVIEW .....	10
<b>SWITCHING BETWEEN OPERATING SYSTEMS .....</b>	<b>11</b>
SWITCHING FROM VISTA OR XP TABLET TO WINDOWS 7 .....	11
SWITCHING FROM WINDOWS 7 TO VISTA OR XP TABLET .....	11

# About this Document

These release notes provide information about the functionality, enhancements, resolved problems and known issues in the N-trig DuoSense™ Multi-Touch Package for Windows 7 RC.

## Release Overview

Previously released versions of DuoSense enabled multi-touch gesture detection at device level. This allowed the support of multi-touch gestures in operating systems (OS) which did not inherently support multi-touch (XP Tablet, Vista for 32 and 64 bit).

For more information about working with DuoSense using two different operating systems, see the section entitled [Dual Technology Mechanism](#).

This release contains a full software package that demonstrates true multi-touch digitizer functionality (for more than two fingers simultaneously), and is also compatible with standard Windows 7 capabilities, and protocol.

**Important note:** This software solution is compatible with the Dell Latitude XT, Dell Latitude XT2 and with HP Touch Smart tx2. Additional platforms may be supported by future releases.

Please note, this package is intended for the Windows 7 RC release. Improvements and patches will be released periodically in the future.

## Software Configuration

Windows 7 (Build 7100)	32-bit
Windows 7 (Build 7100)	64-bit

## Hardware Configuration

This RC package uses the following hardware specifications:

Notebook PC	Dell Latitude XT tablet
	Dell Latitude XT2 tablet
	HP TouchSmart tx2 tablet

**NOTE:** This package is only compatible with the above-mentioned software and hardware.

# Installation Instructions

This section describes the various installation options for N-trig DuoSense Multi-Touch Package for Windows 7 RC.

The installation package comprises a host driver, firmware and software package. Installation of the N-trig DuoSense Multi-Touch Package for Windows 7 should be performed in the standard Windows manner.

**Note:** You must ensure that your computer is securely connected to an electrical source during the installation process.

There are two installation procedures available.

## 1. [No prior version of DuoSense](#)

Use this procedure if you either uninstalled a prior version of DuoSense for Windows 7, or never upgraded to it.

## 2. [Prior version of DuoSense](#)

You should use this procedure if you either:

- Had a previous version of DuoSense for Windows 7 (beta), and did not uninstall it prior to upgrading to Windows 7 RC
- Currently have an existing version of DuoSense for Windows 7, and have already upgraded to Windows 7 RC

### To install N-trig DuoSense Multi-Touch Package for Windows 7 RC:

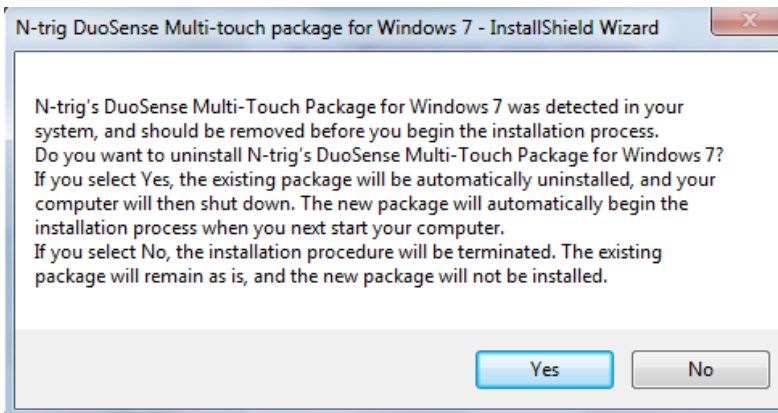
1. Run the <DuoSense\_generic\_bundle\_for\_specific\_hardware\_platform>.exe setup file.
2. Follow the instructions displayed as the installation progresses.
3. The final step of the installation process requires you to restart your computer when the installation process completes. Select **Restart my computer now**, and click **Finish**.

You have now installed N-trig DuoSense Package for Windows 7 RC.

### To install N-trig DuoSense Multi-Touch Package for Windows 7 RC (Prior version of DuoSense)

1. This window will be displayed only after the user run our bundle and the installation process begins. A notification is displayed that your prior version of DuoSense needs to be uninstalled in order to proceed with the new installation.

The following window is displayed:



2. Click **Yes**. The wizard then uninstalls any and all previous versions of DuoSense, concluding with a request for confirmation to shut down your computer.
3. Click **OK**.
4. Once your computer has successfully shut down, manually power it up again.
5. A splash screen is displayed upon start-up, indicating the beginning of the wizard to install the latest N-trig DuoSense Multi-touch package for Windows 7. Click **Next**.
6. Follow the instructions displayed as the installation progresses.
7. The final step of the installation process requires you to restart your computer when the installation process completes. Select **Restart my computer now**, and click **Finish**.

You have now installed N-trig DuoSense Package for Windows 7 RC.

### To remove the N-trig DuoSense Multi-Touch Package for Windows 7 RC:

In the Programs and Features section in the Control Panel, click **N-trig DuoSense Multi-Touch Package for Windows 7**, and select **Remove**.

**Note:** After removal of the N-trig DuoSense Multi-Touch Package for Windows 7 RC, single touch and pen functionality will still be available.

## What's new

- Support of stylus
- Support of Windows 7 64 bit
- Support of palm rejection
- Support of dual-boot
- Calibration using the Control Panel

# Corrected Issues

Description
The Windows SDK sometimes stops working even though the HIDs continue to report.
While using more than two fingers there is track loss of the fingers.
Wake up from sleep / hibernate with single touch instead of multi-touch.
The firmware upgrade / repair option isn't working. In order to install the RC package you need to uninstall the installed N-trig package, shut down, power up again and then install the new package.
Sometimes, near the edges of the screen, there is poor detection.

# Known Issues

The following section describes issues that will be corrected in a future release.

Description
<p>Touch functionality occasionally stops working.</p> <p><b>Workaround:</b> Press ALT+CTL+DEL and then click Cancel. Touch input will resume.</p>
<p>Drivers in this package are not digitally signed (certified), and sometimes a warning message is displayed during installation.</p>
<p>The following issues are relevant when working on Dual boot systems with Windows 7 and Vista, and using Vista:</p> <ul style="list-style-type: none"> <li>• The stylus in Journal and Office applications does not work properly. Tracking works, and items can be marked, but writing does not always work.</li> <li>• A calibration balloon is displayed after every reboot.</li> <li>• After installing the DuoSense MTM package over an existing DuoSense MTG package, the DuoSense MTG package icon remains on display in the system Control Panel.</li> </ul>
<p>The N-trig Applet isn't implemented and therefore, the following functionality is lost:</p> <p>In Auto mode, it is possible to work with stylus and after that with multi-touch without double tapping.</p> <p>Sometimes after completing the installation process, but before performing restart, there is no touch functionality, despite the installation indicating that it completed successfully.</p> <p>Visual feedback in auto mode is not active.</p> <p>Sound feedback does not work – there is no sound when using touch.</p> <p>In the Control Panel, none of the modes are selected.</p> <p>In Touch Only mode, if you use the stylus, the multi-touch functionality is disabled.</p>
<p>The application supports up to 4 fingers. Applying more than 4 fingers on the screen simultaneously may affect the performance.</p>
<p>Occasionally, during the uninstallation process on Vista 32 and 64 bit, an error occurs, and an error message is displayed. Despite this message, the uninstall procedure finishes successfully.</p>
<p>Occasionally, Multi Touch performance is not optimal and track losses and glitches are observed.</p> <p><b>Workaround:</b> Uninstall N-trig bundle and reinstall.</p>
<p>Occasionally, following a long idle period, Multi Touch performance may not be optimal.</p>

Description
<b>Workaround:</b> The issue is resolved automatically within few minutes.
Occasionally, the “Repair” procedure does not succeed and gives a “fatal error” message.
<b>Workaround:</b> Shut down the system and run the “Repair” procedure again.

# Dual Technology Mechanism

## Overview

There are two types of multi-touch technology inherent in DuoSense: Multi Touch Gestures (MTG) and Multi Touch Manipulations (MTM).

DuoSense MTG supports the use of a stylus and up to two fingers, enabling gestures and special multi touch applications. MTG technology is supported by the Vista and XP Tablet OS.

DuoSense MTM supports the use of a stylus and up to 4 fingers, and is supported by the Windows 7 OS.

When switching between different OS, you are also switching between different multi-touch technologies.

The computer models for which these procedures are relevant are the Dell Latitude XT, Latitude XT2 and the HP TouchSmart tx2.

### Important notice:

- If you wish to run a dual boot system, ensure that you install the DuoSense MTG package on Vista or XP **prior** to installing the DuoSense MTM package on Windows 7.
- If you wish to replace your DuoSense MTM package with the original DuoSense MTG package on Windows 7, ensure that you first uninstall the MTM package, prior to installing the MTG package.

Failure to do either of the above may result in irreparable damage to your system.

# Switching between operating systems

With either Windows Vista or XP Tablet, the default DuoSense technology is MTG.

If you uninstall any DuoSense multi-touch package for Windows 7, you will disable MTM functionality, and will only be able to use the DuoSense pen and single-touch functionality.

To resume MTG functionality on Windows 7, you must install the replacement DuoSense MTG functionality, as described [below](#).

## Switching from Vista or XP Tablet to Windows 7

To switch between Windows Vista or XP Tablet and Windows 7, perform the following steps:

Reboot your computer, and run Windows 7.

Install the N-trig DuoSense multi-touch package for Windows 7.

Restart your computer. MTM functionality is enabled.

## Switching from Windows 7 to Vista or XP Tablet

To switch between Windows 7 and Windows Vista or XP Tablet, perform the following steps:

1. Uninstall the N-trig DuoSense multi-touch package for Windows 7. The computer will automatically shut down.
2. Re-start your computer, and run either Windows Vista or XP Tablet, as required. MTG functionality is enabled

**Note:** To enable advanced MTG functionality, upgrade to a newer version of the N-trig DuoSense package.